

PHILIPS

SmartBright

LED Streetlight

BRP130 70W

BRP131 100W

BRP132 140W




innovation  you

SmartBright Road

Sleek, reliable and cost-efficient

- Basic LED luminaire to target non-tender road lighting segment
- Three housing size to retrofit 100W to 250W HPSV conventional luminaire.

Key Features;

- One to one replacement of conventional SON or HPL luminaire
- Replaceable 10kV surge protection device 
- 30K L70 35C Ta rated lifetime
- **Upgrade to 130lm/w luminous efficacy**
- Operating temperature range - 40°C < Ta < 50°C
- Housing in dark grey (RAL7043)
- One optic option (DM)
- Light weight (max 4 KG)
- Fly wire for easy installation



Key Features



Fully IP66 & IK08



Polycarbonate optical front cover



slim, sleek and light weight design



PHILIPS

Key Features



10kV SPD

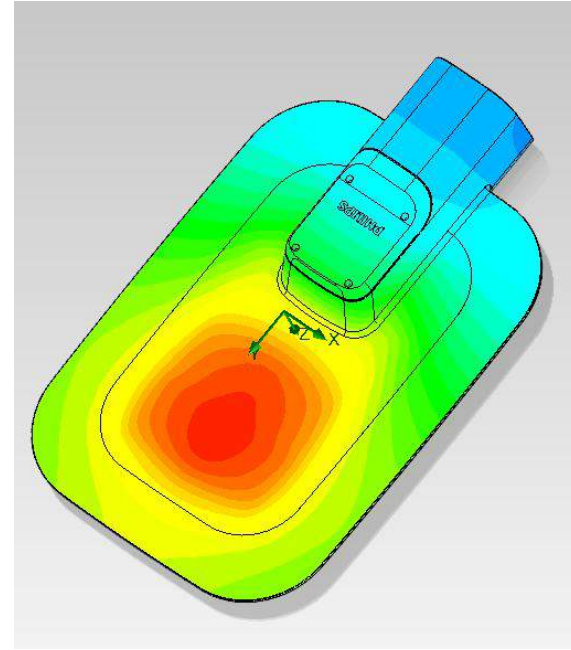
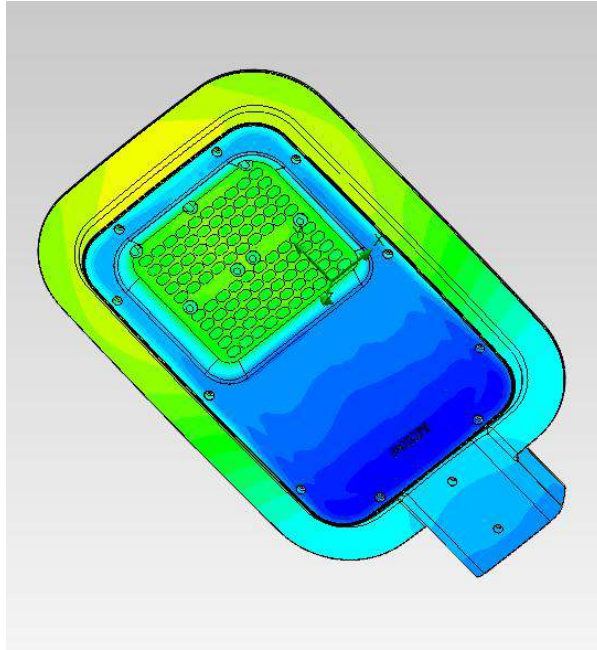


ADC1 aluminum diecast housing with finless design

42-60mm spigot

Wide operating temperature range

$-40^{\circ}\text{C} < T_a < 50^{\circ}\text{C}$



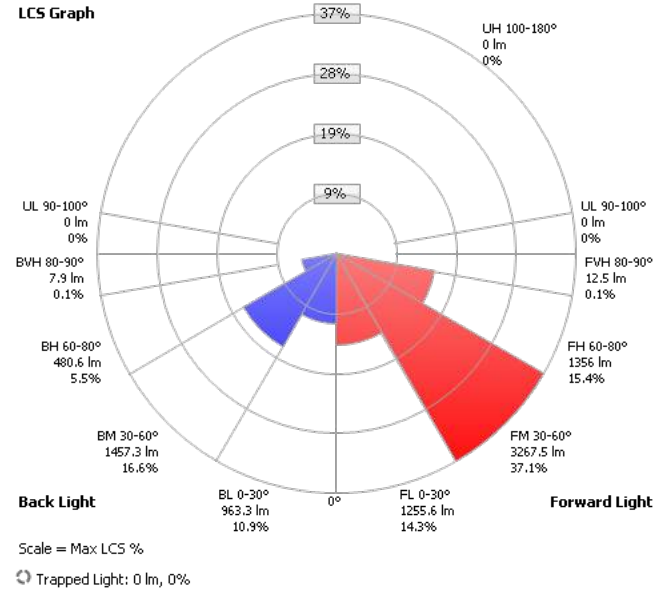
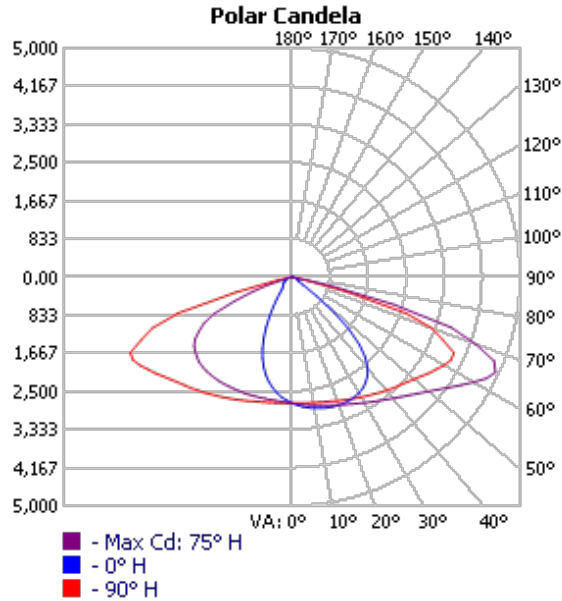
Dimension

Type	Weight(kg)	L×W×H(mm)	Wind force area(m ²)
BRP130	2.6	382.5×248.4×85	0.08
BRP131	3.2	453.8×277.2×85	0.11
BRP132	4	508.2×325.5×85	0.14



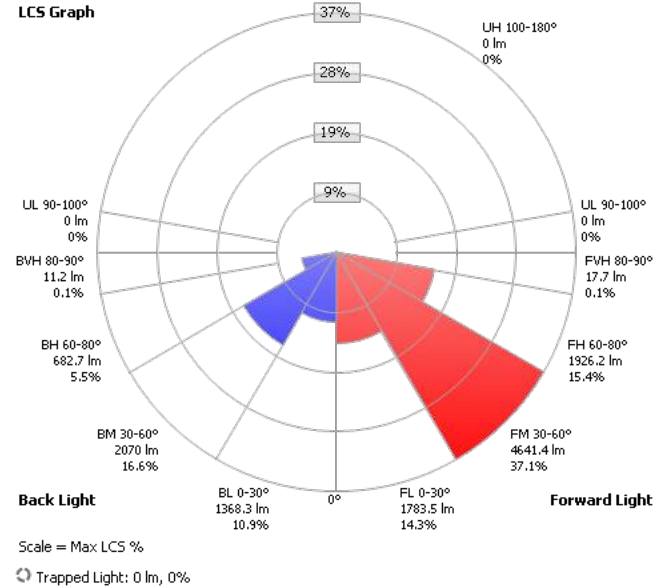
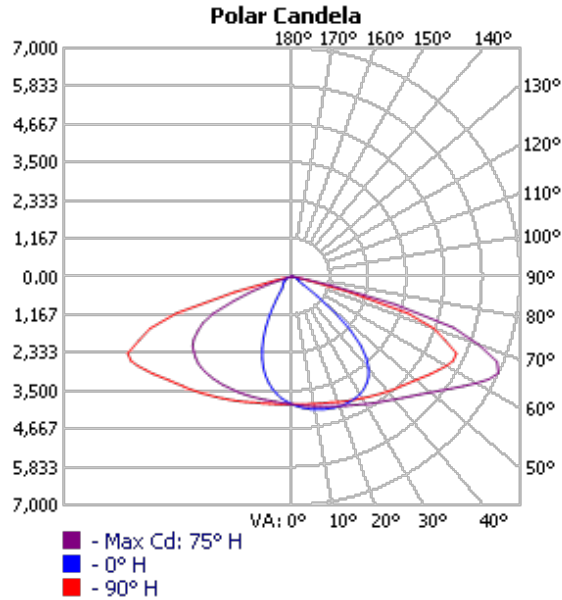
Optic

Typical 70W



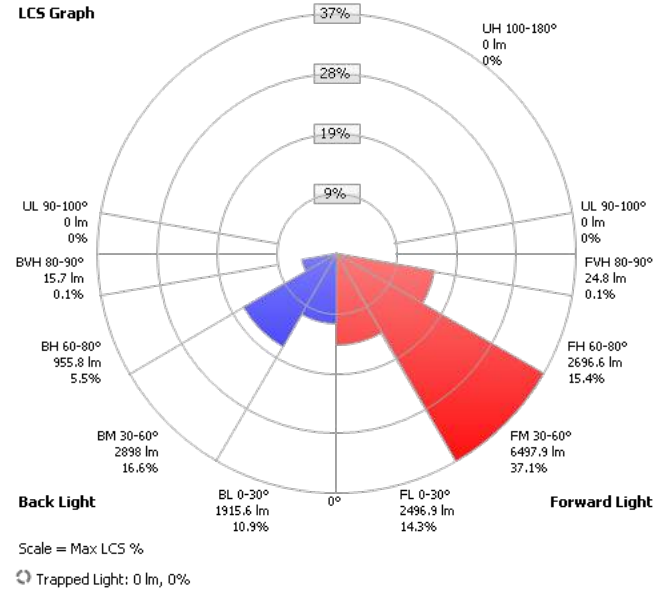
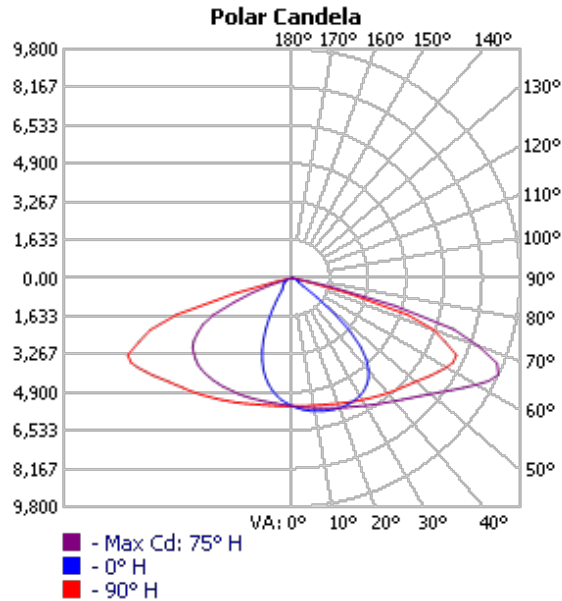
Optic

Typical 100W



Optic

Typical 140W



Specifications Update – Q4 2021



	<i>Target Specification</i>	<i>Old</i>	<i>New</i>
System	Flux packages (lm)	7000/10000/14000	8750/12500/17500
	CCT/color	4000K	4000K
	CRI	70 (typ.)	70 (typ.)
	System efficiency(typical)	100+ lm/W Typical	130 lm/W Typical
	System wattage	70W/100W/140W	70W/100W/140W
	CCT option if any	3000K/5700K	3000K/5700K
	SDCM	6	7
Optics	Target light distribution	DM	DM
	Lens	PC	PC
Electrical	Input voltage	220-240V, 50/60hz	220-240V, 50/60hz
	Power Factor	0.9	0.9
	surge protection	Replaceable 10KV	Replaceable 10KV
	Interface to main	fly wire	fly wire
	Connection (push-in, quick disconnect...) if any to specify	NA	NA
	Serviceability Electrical	SPD	SPD
	Specify components require toolless replacement	None	None
Lifetime	Driver lifetime	follow luminaire lifetime requirement	follow luminaire lifetime requirement
	Luminaire lifetime	30k hours L70B50 @35C Ta outdoor	30k hours L70B50 @35C Ta outdoor
	Warranty	3 years	3 years
Environment	Operating temperature	- 40°C < Ta< 50°C	- 40°C < Ta< 50°C
	IP	IP66	IP66
	IK	IK08	IK08
	Salty spray	500 hours	500 hours
Mechanical	Mounting	Side entry (42~60mm)	Side entry (42~60mm)
	Tilt angle	NA	NA
	Material &finishing	Aluminum / Dark grey color	Aluminum / Dark grey color
	Look & feel	Refer to product image	Refer to product image
Approval / Norms	Min. approbation	CB/CQC/AS/NZS 60598/CE	CB/CQC/AS/NZS 60598/CE
	Sustainability (RoHS, REACH, E*...)	RoHS/REACH	RoHS/REACH
Package information	Industrial package or color package; how many pcs in one box	Color package with GS1 barcode complied	Color package with GS1 barcode complied

ETO is not available as Trade product

Configuration



12nc	Product Description	Barcode/ EAN1	Voltage	Frequency	Ta	Class	IP	IK	Color
911401675007	BRP130 LED88/WW 70W 22-24V DM GC	6922341947858	220-240	50/60	35	I	66	8	RAL7043
911401675107	BRP130 LED88/NW 70W 220-240V DM GC	6922341947865	220-240	50/60	35	I	66	8	RAL7043
911401675307	BRP131 LED125/WW 100W 220-240V DM GC	6922341947872	220-240	50/60	35	I	66	8	RAL7043
911401675407	BRP131 LED125/NW 100W 220-240V DM GC	6922341947889	220-240	50/60	35	I	66	8	RAL7043
911401675607	BRP132 LED175/WW 140W 220-240V DM GC	6922341947896	220-240	50/60	35	I	66	8	RAL7043
911401675707	BRP132 LED175/NW 140W 220-240V DM GC	6922341947902	220-240	50/60	35	I	66	8	RAL7043
911401675907	BRP130 LED88/WW 70W 220-240V DM GM	8719514548879	220-240	50/60	35	I	66	8	RAL7043
911401676007	BRP130 LED88/NW 70W 220-240V DM GM	8719514548886	220-240	50/60	35	I	66	8	RAL7043
911401676107	BRP130 LED88/CW 70W 220-240V DM GM	8719514548893	220-240	50/60	35	I	66	8	RAL7043
911401676207	BRP131 LED125/WW 100W 220-240V DM GM	8719514548909	220-240	50/60	35	I	66	8	RAL7043
911401676307	BRP131 LED125/NW 100W 220-240V DM GM	8719514548916	220-240	50/60	35	I	66	8	RAL7043
911401676407	BRP131 LED125/CW 100W 220-240V DM GM	8719514548923	220-240	50/60	35	I	66	8	RAL7043
911401676507	BRP132 LED175/WW 140W 220-240V DM GM	8719514548930	220-240	50/60	35	I	66	8	RAL7043
911401676607	BRP132 LED175/NW 140W 220-240V DM GM	8719514548947	220-240	50/60	35	I	66	8	RAL7043
911401676707	BRP132 LED175/CW 140W 220-240V DM GM	8719514548954	220-240	50/60	35	I	66	8	RAL7043
911401691807	BRP130 LED88/WW 70W 220-240V DM ANZ	8719514548015	220-240	50/60	35	I	66	8	RAL7043
911401691907	BRP130 LED88/NW 70W 220-240V DM ANZ	8719514548022	220-240	50/60	35	I	66	8	RAL7043
911401692007	BRP130 LED88/CW 70W 220-240V DM ANZ	8719514548039	220-240	50/60	35	I	66	8	RAL7043
911401692107	BRP131 LED125/WW 100W 220-240V DM ANZ	8719514548046	220-240	50/60	35	I	66	8	RAL7043
911401692207	BRP131 LED125/NW 100W 220-240V DM ANZ	8719514548053	220-240	50/60	35	I	66	8	RAL7043
911401692307	BRP131 LED125/CW 100W 220-240V DM ANZ	8719514548060	220-240	50/60	35	I	66	8	RAL7043
911401692407	BRP132 LED175/WW 140W 220-240V DM ANZ	8719514548077	220-240	50/60	35	I	66	8	RAL7043
911401692507	BRP132 LED175/NW 140W 220-240V DM ANZ	8719514548084	220-240	50/60	35	I	66	8	RAL7043
911401692607	BRP132 LED175/CW 140W 220-240V DM ANZ	8719514548091	220-240	50/60	35	I	66	8	RAL7043

*MS version with integrated Motion Sensor will be released later;
WW non-MS version will be phased-in once old version's material is consumed.*

Packaging

Typical 70W



Packaging

Typical 100W



Packaging

Typical 140W



