



MASTER LEDtube Mains T5

MASTER LEDtube 1200mm HE 16.5W 830 T5

The new Philips Master LEDtube Mains T5 brings simplicity to your lighting project. You don't need to pay attention to the driver technology anymore. Thanks to a unique design, Philips MASTER LEDtube Mains T5 installs in luminaires operating on mains power connection. So simple to operate! ;Perfectly safe, reliable & easy to install Philips MASTER LEDtube Mains T5 is the ideal alternative to standard fluorescent tubes to maximize value over lifetime with high energy saving and lower maintenance costs.

Product data

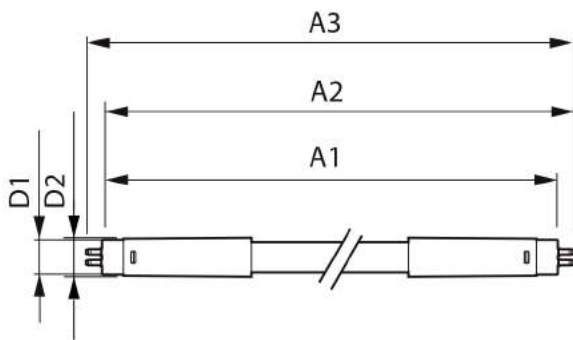
General information		Operating and electrical	
Cap-Base	G5 [G5]	Input Frequency	50 to 60 Hz
EU RoHS compliant	Yes	Power (Nom)	16.5 W
Nominal Lifetime (Nom)	50000 h	Lamp Current (Max)	180 mA
Switching Cycle	200000	Lamp Current (Min)	70 mA
Technical Type	16.5-28W	Starting Time (Nom)	0.5 s
		Warm Up Time to 60% Light (Nom)	0.5 s
		Power Factor (Nom)	0.9
		Voltage (Nom)	100-240 V
Light technical		Temperature	
Color Code	830 [CCT of 3000K]	T-Ambient (Max)	45 °C
Beam Angle (Nom)	200 °	T-Ambient (Min)	-20 °C
Luminous Flux (Nom)	2300 lm	T-Storage (Max)	65 °C
Color Designation	White (WH)	T-Storage (Min)	-40 °C
Correlated Color Temperature (Nom)	3000 K	T-Case Maximum (Nom)	70 °C
Luminous Efficacy (rated) (Nom)	139.00 lm/W		
Color Consistency	<6		
Color Rendering Index (Nom)	80		
LLMF At End Of Nominal Lifetime (Nom)	70 %		

MASTER LEDtube Mains T5

Controls and dimming	
Dimmable	No
Mechanical and housing	
Bulb Finish	Frosted
Bulb Material	Glass
Product Length	1200 mm
Bulb Shape	Tube, double-ended
Approval and application	
Energy Saving Product	Yes
Approval Marks	RoHS compliance CE marking KEMA Keur certificate

Energy Consumption kWh/1000 h	17 kWh
Product data	
Full product code	871869978349500
Order product name	MASTER LEDtube 1200mm HE 16.5W 830 T5
EAN/UPC - Product	8718699783495
Order code	929002420908
Numerator - Quantity Per Pack	1
Numerator - Packs per outer box	10
Material Nr. (12NC)	929002420908
Net Weight (Piece)	0.215 kg

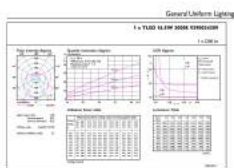
Dimensional drawing



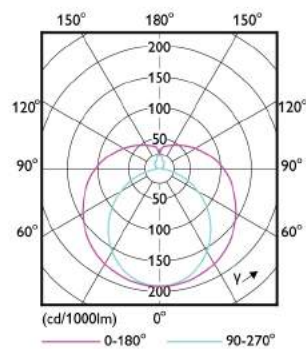
MASTER LEDtube 1200mm HE 16.5W 830 T5

Product	D1	D2	A1	A2	A3
MASTER LEDtube 1200mm HE 16.5W 830 T5	15.8 mm	19 mm	1149 mm	1156.1 mm	1163.2 mm

Photometric data



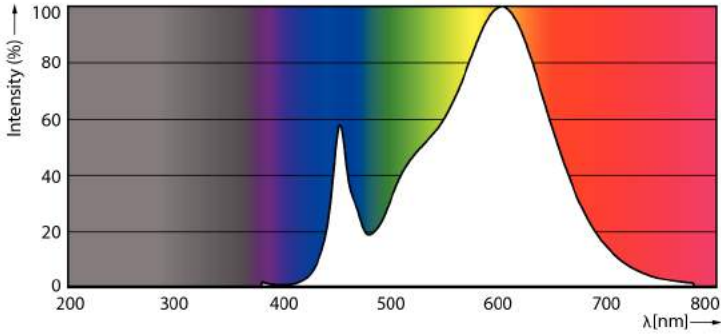
LEDtube MAS 16,5W G5 2300lm 830



LEDtube MAS 8W G5 1000lm

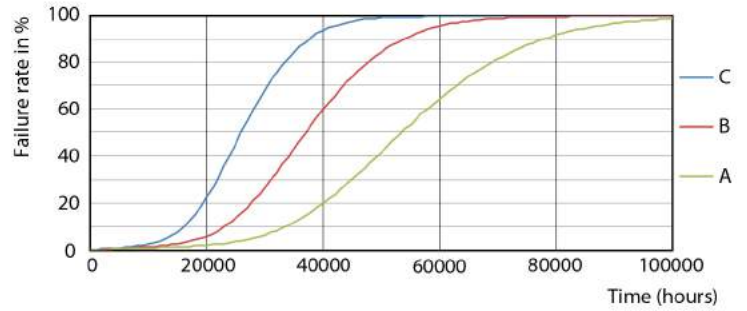
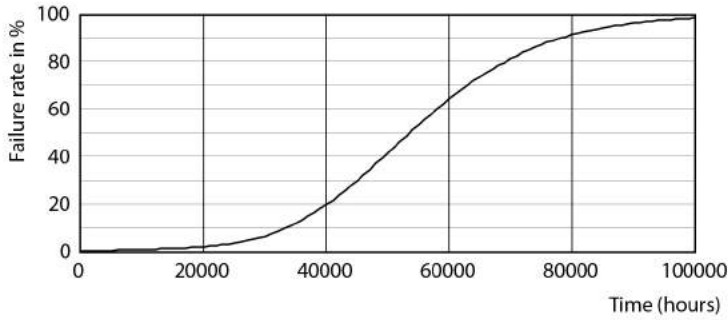
MASTER LEDtube Mains T5

Photometric data

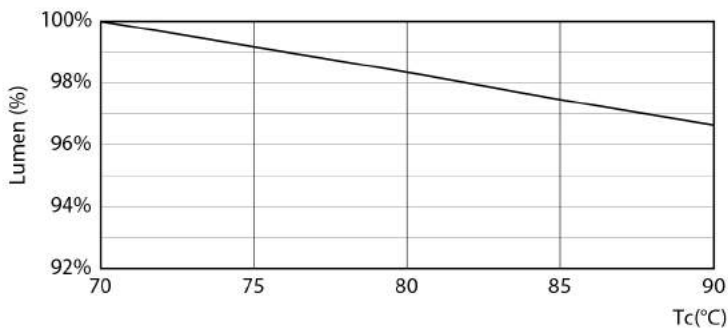


LEDtube MAS 16,5W G5 2300lm 830

Lifetime

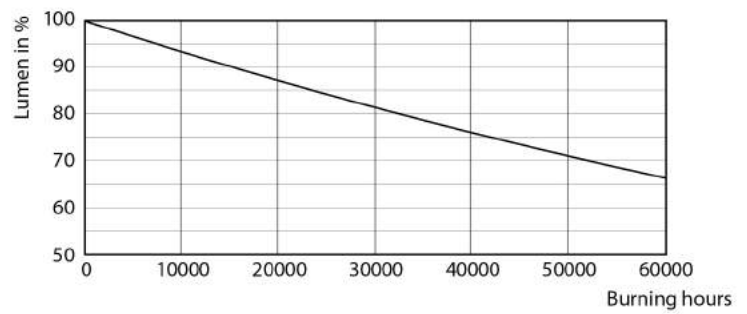


Life Expectancy Diagram



LEDtube 16,5W 50K LumenVsTc

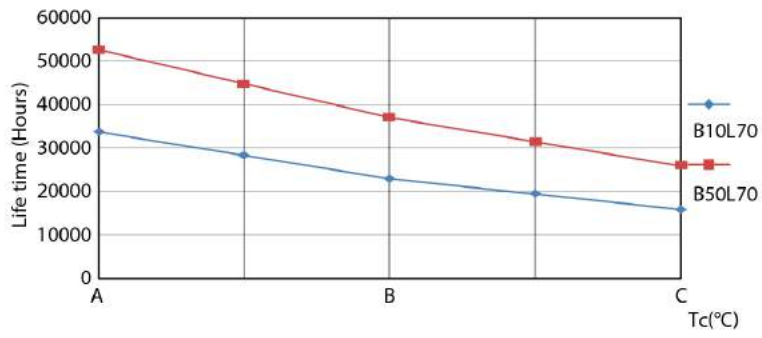
LEDtube 50K FailureRate-LED



Lumen Maintenance Diagram

MASTER LEDtube Mains T5

Lifetime



LEDtube 50K LifetimeVsTc-LED

